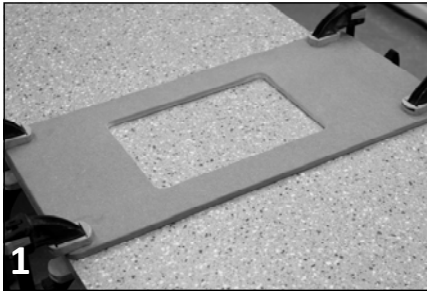


Fabricator Range - Installation Advice

Fitting an undermount solid surface sink with MISTRAL worktops

Before undertaking any fabrication work, please make sure you have read, fully understand and comply with all Health & Safety Legislation, and that your working environment is both clean and safe.

Also, please ensure that you have read through this installation advice and if you are unsure about anything, contact our product support team on 0845 6580 333 or visit www.karonia.com/orello for more information.



To begin you will need to create the initial cut-out using a jig, router, cutter and 24mm guide bush. This will provide an approximate worktop overhang of 5mm all the way round.



Key the underside of the worktop where the sink flange will sit using P240 grit paper lightly sanding round each side of the cut-out. Ensure to remove any batch number print that may contaminate the adhesive.



Using the same process, key all sides of the sink flange. Be careful not to sand the internal edge of the sink. Once complete wipe down both jointing surfaces using isopropyl alcohol wipes.



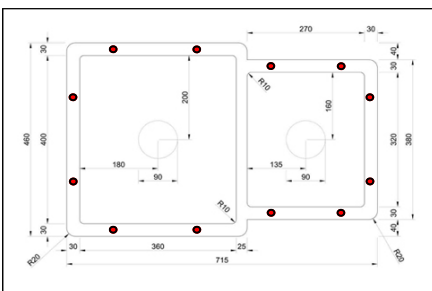
Position the sink over the cut-out on the underside of the worktop looking through the waste hole for reference. Check that the overhang is equal all the way round the sink.



Once in position, mark small positioning points around the outside edge of the sink flange and onto the underside of the worktop so that you can re-position the sink accurately when moved.



Remove the sink and place it on a waste piece of board making sure the sink is fully supported. Drill through the centre of the sink flange and into the waste piece of board using a 6.5mm drill bit.



This process needs to be repeated around the entire sink flange to provide sufficient support. The example above shows how the holes should be positioned relative to the sink size.



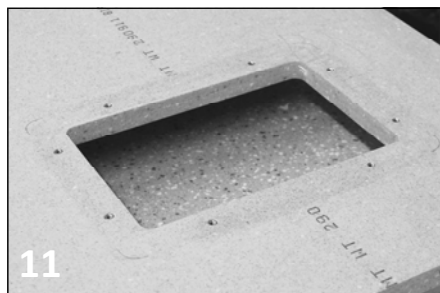
Re-position the sink to the underside of the worktop and carefully drill through the flange holes into the underside of the worktop to mark the hole positions using the same 6.5mm drill bit.



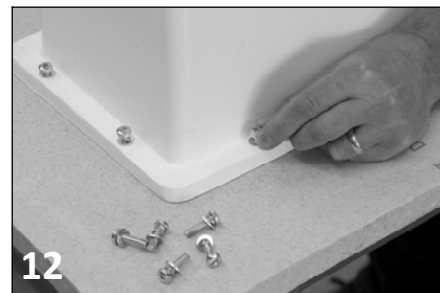
Use an 8.2mm drill bit to drill holes at the marked points to a depth of 13mm to accommodate the brass threaded plugs.



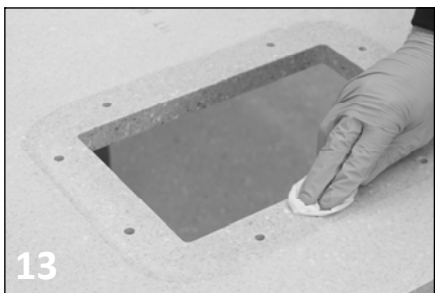
Once all the necessary plug holes have been drilled, make sure that the holes are free from debris and dust so that the brass threaded plugs are not impeded when fitting.



Push the brass plugs into the holes, the end with the full ring being the top, and make sure they are a tight fit. The top of the plugs should be flush with the underside of the worktop.



Re-position the sink and dry fit all the bolts to make sure everything is lined up correctly with the brass plugs.



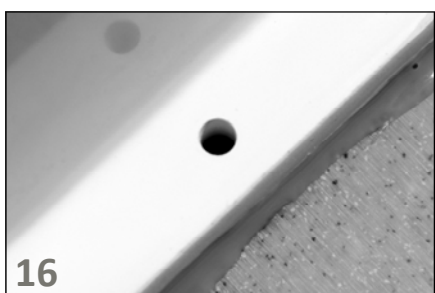
Wearing the protective gloves, thoroughly clean the underside of the worktop using the alcohol wipes. Ensure to remove all pencil marks and any debris and dust created by previous processes.



Repeat this process on the sink flange and leave both surfaces to air dry. To prevent any joint contamination after cleaning, be sure not to touch either of the jointing surfaces.



Apply a bead of worktop colour-matched adhesive to the entire inner and outer edges of the sink flange. You will have approximately 10 minutes working time (subject to room temperature).



Gently place the sink into position making sure the holes in the sink flange sit directly over the brass plugs. Visually check that you have a continuous bead of adhesive around the sink flange on both sides.



Place the washers onto the bolts (spring washer first) and insert the bolts through the flange holes into the brass plugs. Tighten each bolt in stages keeping the grip on the sink even all the way round.



Continue to tighten the bolts until the spring washers have been flattened. After approximately 60 minutes (subject to room temperature) the adhesive will be cured and the worktop can be turned over to its face side.



Using a router and a flush sink profile cutter, remove the excess adhesive and worktop overhang. Make sure you set the cutter to the correct depth (We recommend a test cut on a waste piece of material first).



Using P240 and then P320 sanding discs and random orbital sander with extraction, sand away any residual adhesive until the worktop edge is flush with the sink and the joint is smooth.



Detailed sanding and finishing on the internal corners will be best achieved by hand. Once the worktop edge has been sanded flush with the sink, finish the whole area to the same level as the rest of the worktops.